

Buzzard Gulch Trails Montrose County

- Trailhead (no water/restrooms)
- Trail Junctions
- Trail Mileage Between Junctions
- Gate

Single Track Mountain Bike Trails

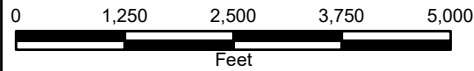
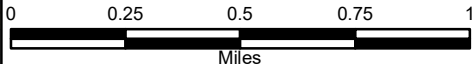
- Easy Trail
- Intermediate Trail
- Difficult Trail
- Easy Trail (OldTwo-Track)
- Difficult Trail (OldTwo-Track)
- Easy Dirt Road
(Stay on Road and Close Gates)

Reference Features

- Horse Trail - No Bikes!
- High Voltage Transmission Line
- Paved Road
- Gravel/Primitive Road

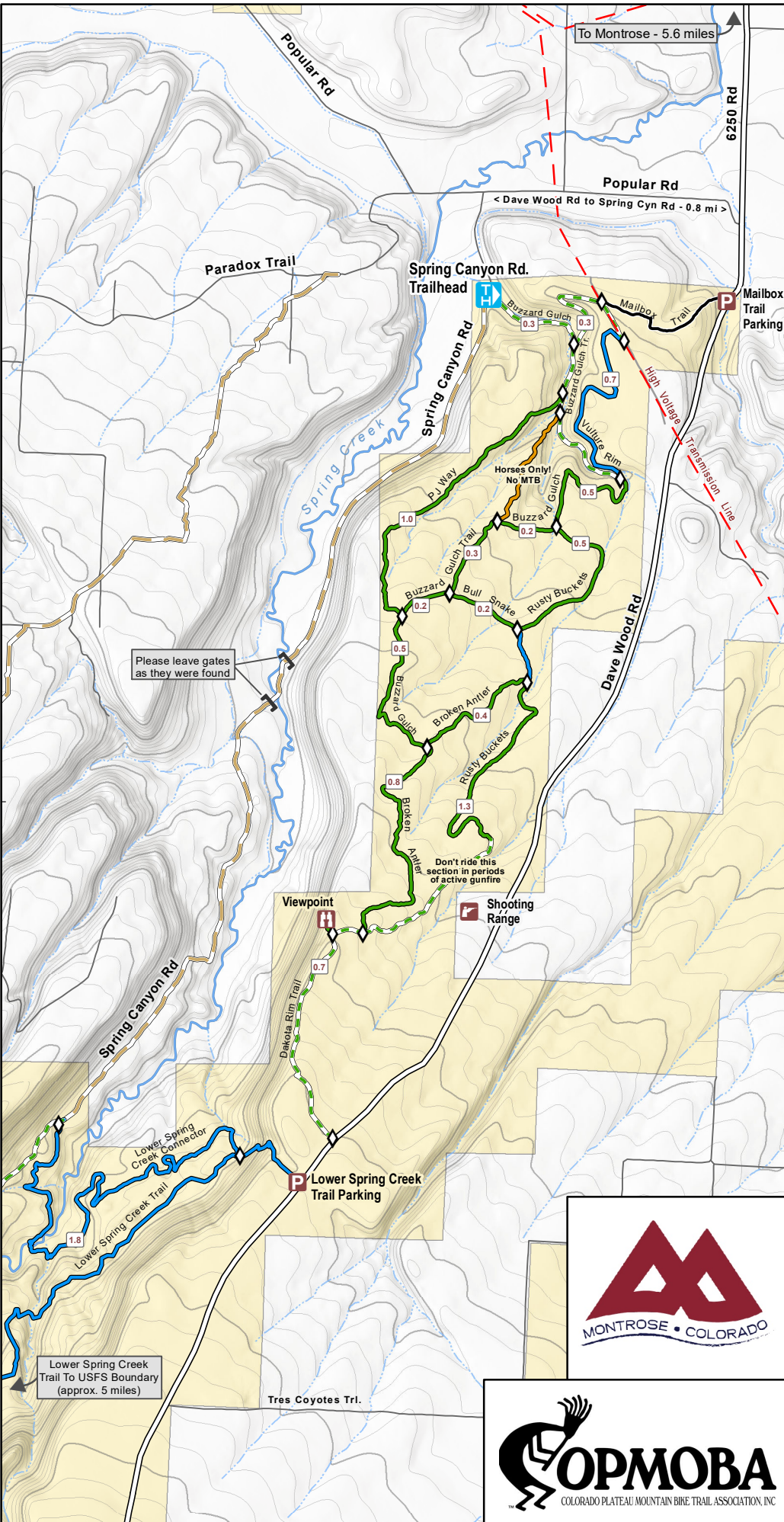
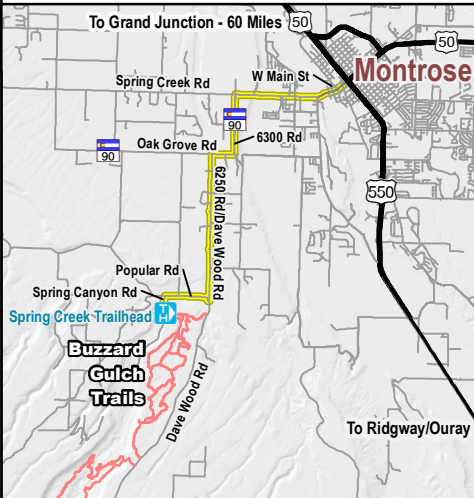
Land Ownership

- Bureau of Land Management
- Private



Contour Interval = 20 ft.

\\waterhom\GIS\Specia\Projects\BuzzardGulch_MTB_Trails\BuzzardGulch_MTB_Trails.mxd



Please leave gates as they were found

Don't ride this section in periods of active gunfire

Lower Spring Creek Trail To USFS Boundary (approx. 5 miles)

Tres Coyotes Tri.